

STONEHENG
by Linda Ludovico

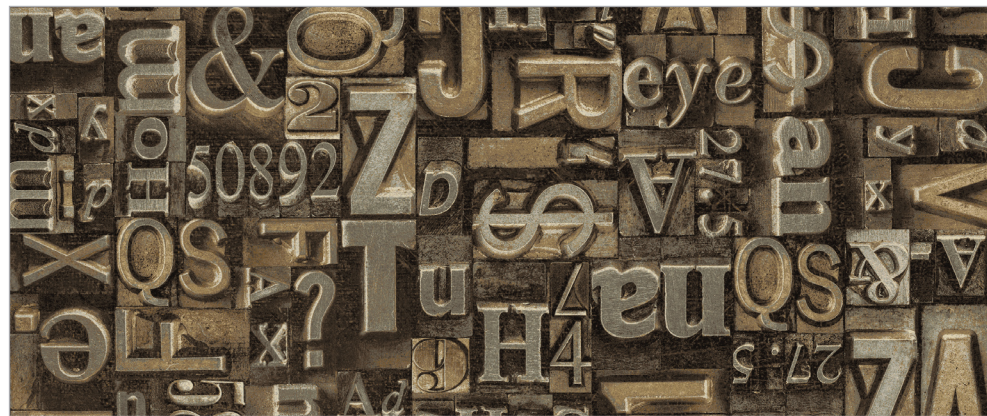
Heavy Metal Gold



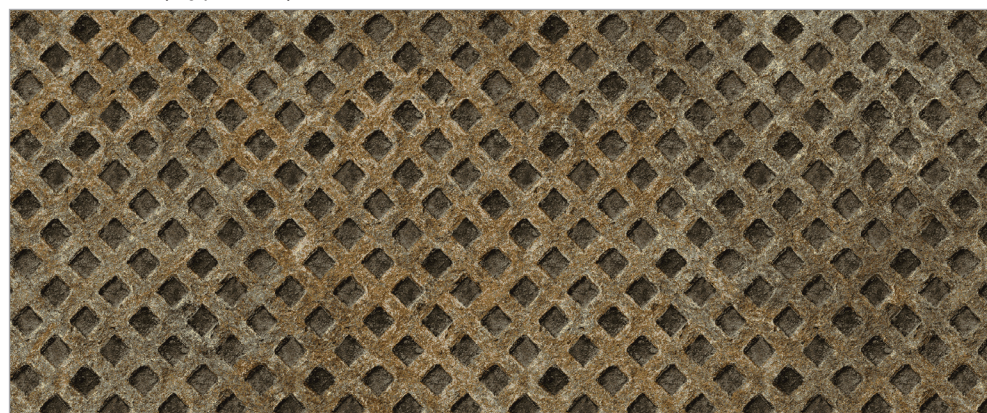
23734M-32 | Heavy Metal Panel | Gold



23735M-32 | Rough Metal | Gold



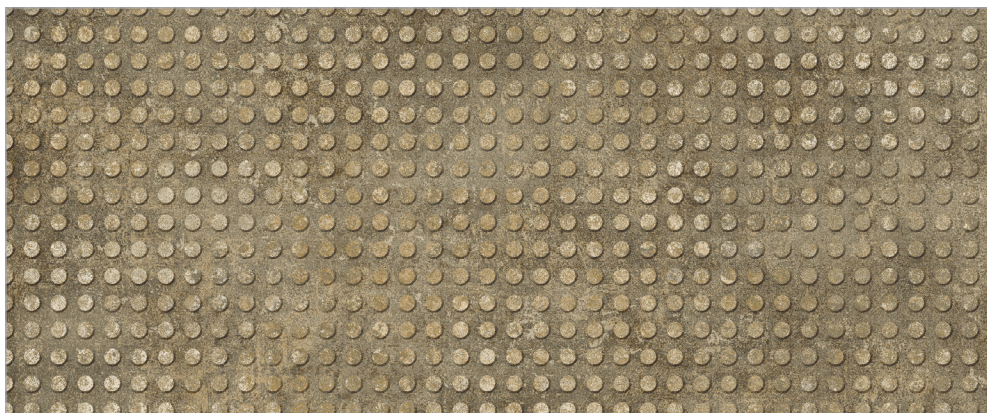
23740M-32 | Type Set | Gold



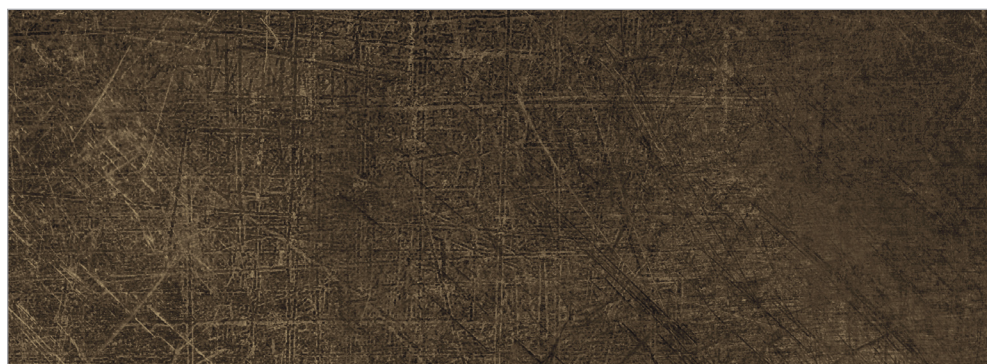
23738M-32 | Metal Grid | Gold



23741M-32 | Cogs and Wheels | Gold



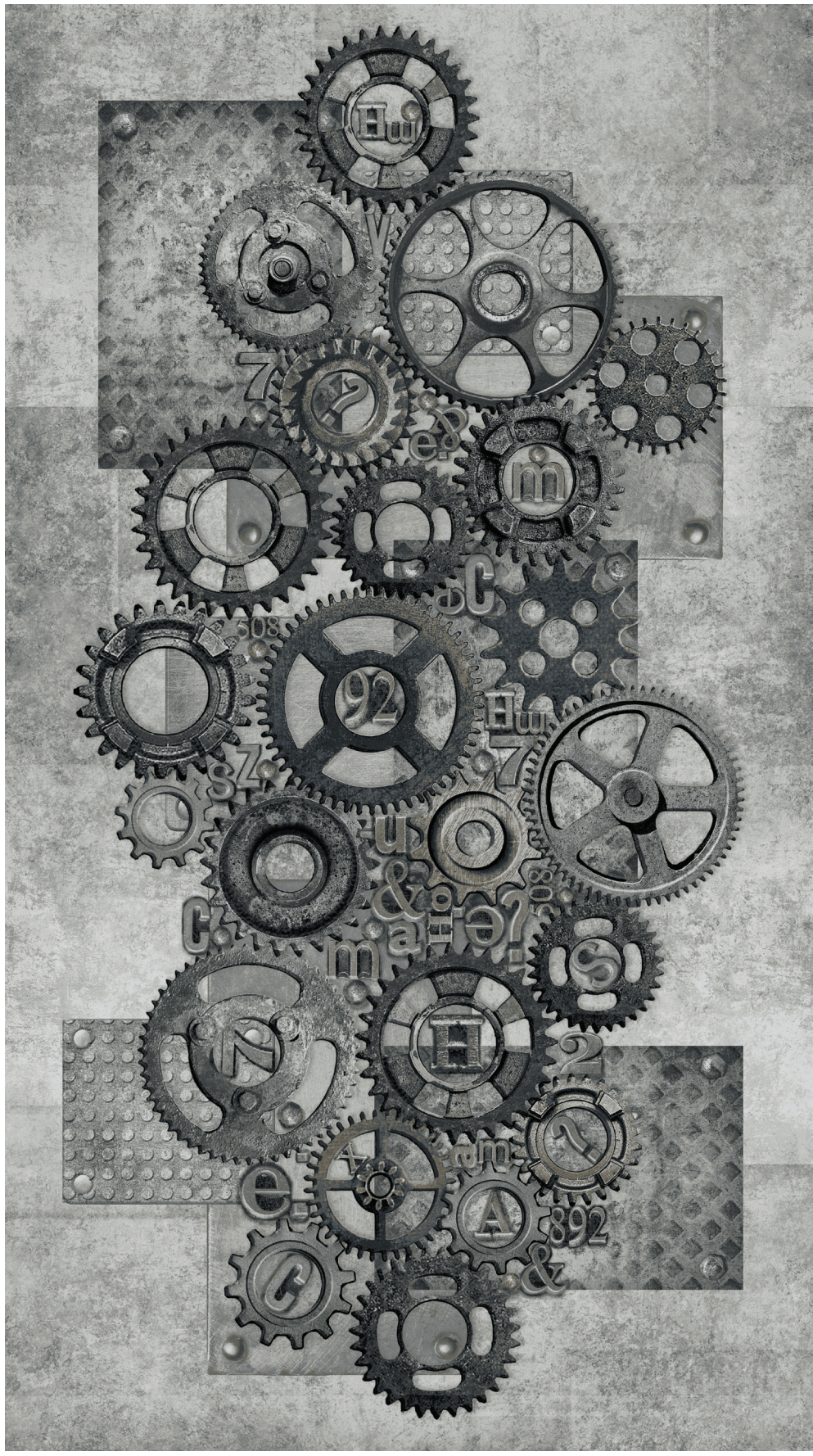
23739M-32 | Metal Dots | Gold



23737M-32 | Scratched Metal | Gold

STONEHENGE
by Linda Ludovico

Heavy Metal Pewter



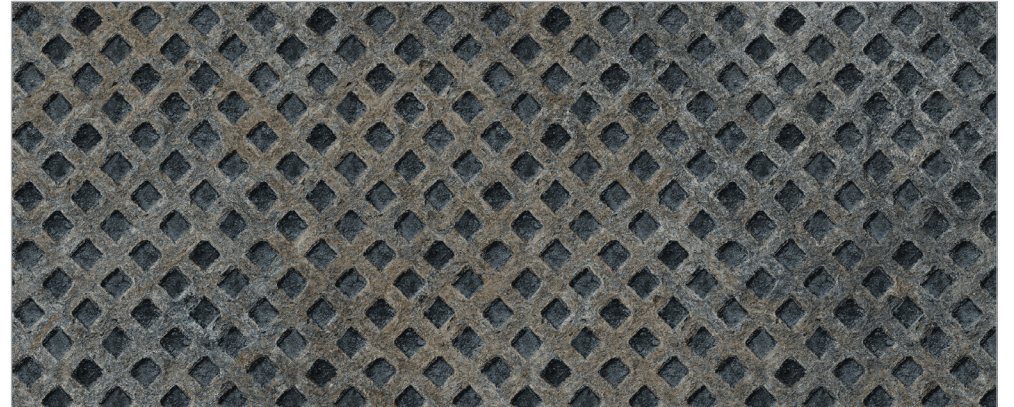
23734M-95 | Heavy Metal Panel | Pewter



23735M-95 | Rough Metal | Pewter



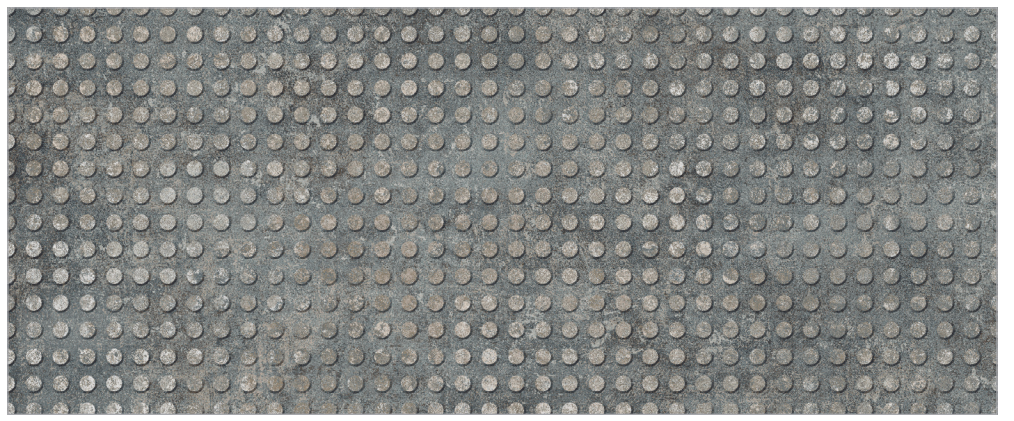
23740M-95 | Type Set | Pewter



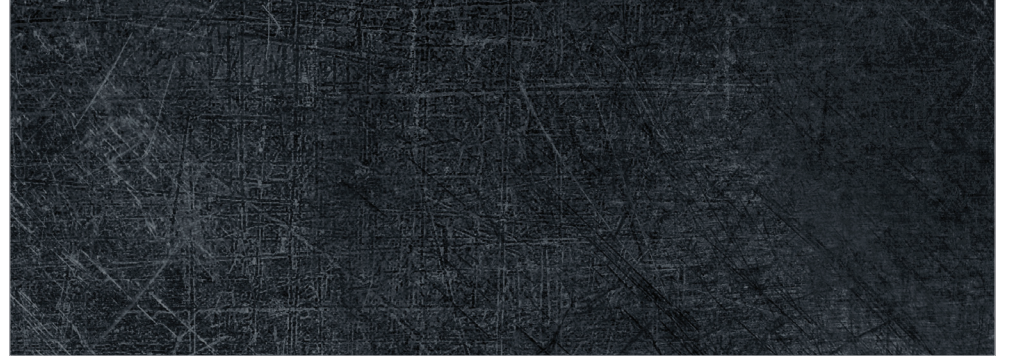
23738M-95 | Metal Grid | Pewter



23741M-95 | Cogs and Wheels | Pewter



23739M-95 | Metal Dots | Pewter



23737M-95 | Scratched Metal | Pewter

STONEHENGE by Linda Ludovico **Heavy Metal**

Created by celebrated Stonehenge designer Linda Ludovico, Heavy Metal embraces two metallic palettes including Gold and Pewter. Three feature, metal inspired prints are complemented by four exquisitely detailed Stonehenge textures ranging in value from light to dark all with metallic accents. Gold and Pewter can be used alone or in combination to create something completely unique. Heavy Metal is equally at home in with traditional vintage or modern urban style. Define your style with Stonehenge Heavy Metal!

